



RSW SERIES

Infrared Patio Heaters

Wind and Rain Resistant



 **STERLING**
HVAC PRODUCTS





Tinted Ceramic Glass Series Infrared Patio Heater

Wind and Rain Resistant

Extend the Outdoor Heating Season

The new Sterling Sunscape Tinted Ceramic Glass Series patio heaters are the perfect solution to extend the outdoor season by providing the warmth of radiant heat.

Provides a level of comfort for your outdoor dining and entertainment areas. Perfect for other partially covered outdoor environments like patios, bars and smoking areas.

Increases available outdoor restaurant seating capacity and revenue. For consumers it extends the outdoor season, permitting enjoyment of the outdoor space.

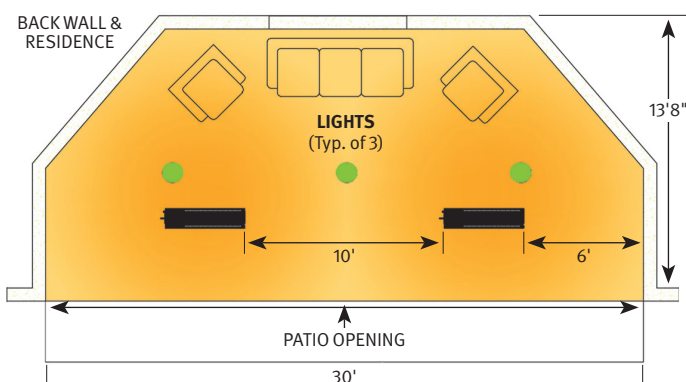
Using the same principle as the sun, radiant warmth from Sterling's Sunscape Series is delivered directly to people at floor level first, before heating the surrounding air. This provides a comfortable envelope of warmth in seating areas below.

Designed with high temperature tinted glass which provides additional protection on windy days and enhances the heater's aesthetic appeal – unlike typical infrared patio heaters which are affected by the adverse effects of the wind and weather conditions, often resulting in flame lift-off – called heat rollout – and reduced efficiency in windy conditions.

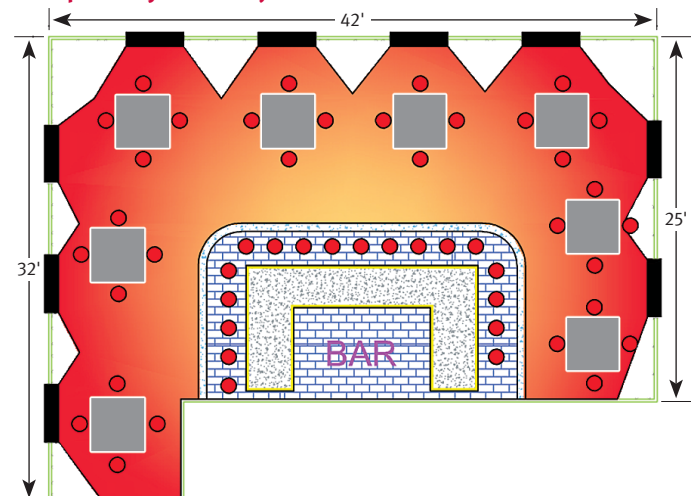
Features

- High Efficiency Ceramic tiles that produce environmentally friendly emission levels below nationally recognized levels (as defined by California Energy Commission). NOx emission levels as low as 15 parts per million adjusted for 3% O₂.
- Tinted ceramic glass technology allows for wind resistance up to 40 mph.
- Extremely quiet operation. No blower or fan noise.
- Potted (Water Resistant) Direct Spark Ignition module for harsh environmental conditions.
- The burner box is constructed with weather resistant, zinc plated materials with 3 mil black hi-temperature silicone powder coated paint.
- Horizontal or angle mounting up to 60°. Can be suspended from ceiling or angle mounted from column or sidewall with optional adjustable mounting brackets.
- Can be installed with 45 or 60 degree angles at lower mounting heights (e.g., 7 ft.) to reduce intensity.
- Clearances as low as 10" above the heater with optional shield.
- Covers 12' x 12' area with minimal wind conditions.
- Model RSW35-N2/L2 is factory shipped with two stage control and can be used with optional 3 position switch for ultimate comfort. Operate at first stage (24,000 Btu/hr) during milder days and full power (35,000 Btu/hr) on colder days.
- Models with Control Option N3 or L3 Two Stage w/ Remote include wireless remote operation. One 2-stage remote can control multiple N3/L3 heaters.
- 3-year limited warranty on the burner assembly, and 1-year limited warranty on the controls.
- CSA Design Certified – ANSI Z83.19 & ANSI Z83.26 Standard.
- Manufactured with pride in the USA.

Residential Patio, Top View – Project 1



Floorplan Layout – Project 2

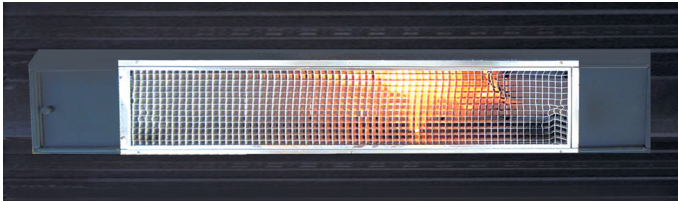


Infrared Patio Heater Comparisons

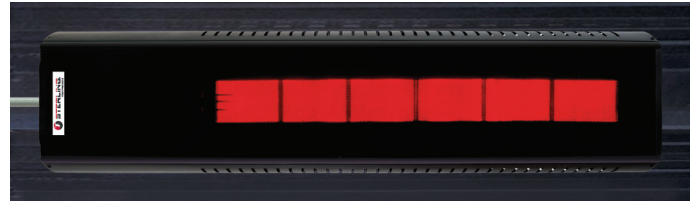
Competitive Models vs. Sterling's Sunscape Tinted Ceramic Glass Series

Adverse Wind Resistance

Typical Competitive Model



Sterling Sunscape Series

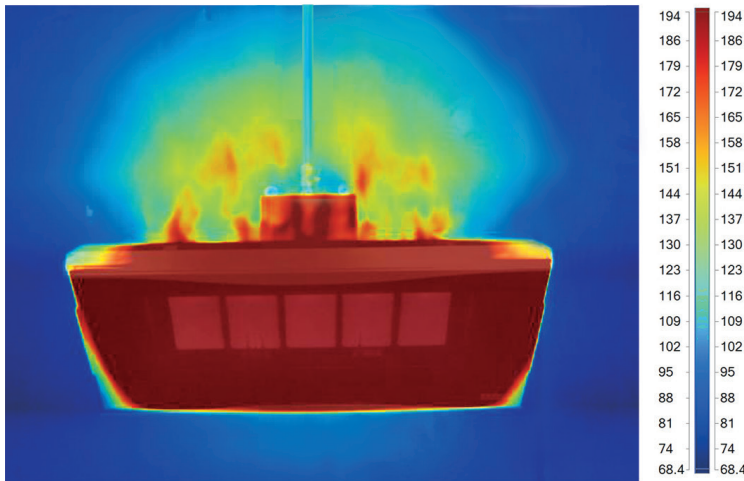


Both heaters shown above were installed horizontally – photos were taken looking straight up from floor level.

Installation photographs demonstrate how adverse wind conditions can affect performance of infrared heaters. On typical competitive models (above left) the flame exits the burner, which can eventually melt the protective grill. The Sterling Sunscape Series (above right) features a totally enclosed burner preventing heat rollout during harsh wind conditions.

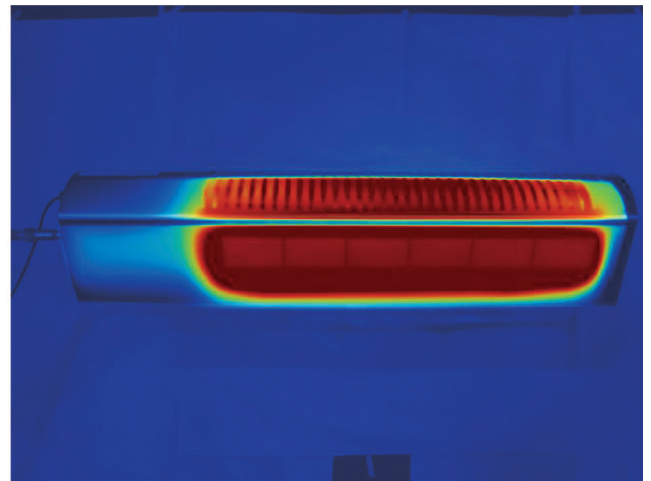
The Sunscape with tinted ceramic glass can operate in winds up to 40 MPH without any adverse wind affects. The glass front protects the burner and improves burner performance resulting in higher efficiency.

Angle Mounting Heat Rollout – Infrared Photography



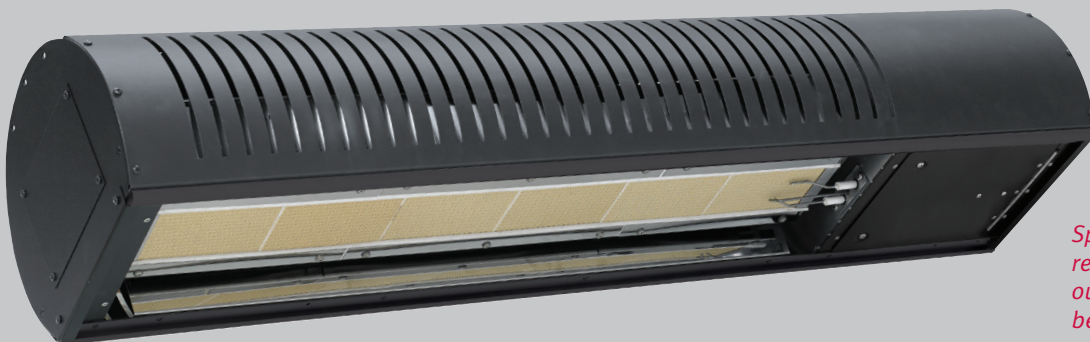
Leading Competitive Model

The leading competitive model shows that flames are not totally enclosed – evident in darker environments. Exposed flame outside the heater is not desirable and can be a potential safety issue if the heater is mounted too close to combustible materials.



Sterling Sunscape Series

The Sunscape Series burner flame is totally enclosed, for safe and efficient unit operation. No exposed flames outside the heater to worry about.



Specially designed internal reflectors enhance the radiant output and are totally hidden behind the tinted ceramic glass.

Tinted Ceramic Glass Patio Heater Series

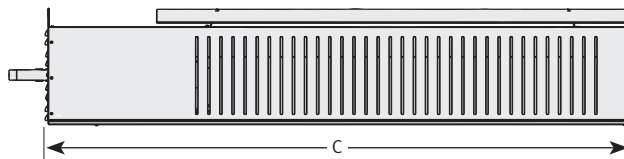
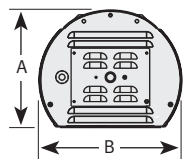
Specifications

MODEL**	CONTROL OPTIONS	INPUT BTU/HR		TYPICAL MOUNTING HEIGHT*		SPACING BETWEEN HEATERS		GAS TYPE	BURNER PRESSURE	SUPPLY PRESSURE		VOLTAGE/AMPS IGNITION TYPE	SHIPPING WEIGHT
		HIGH	LOW	HORIZ	ANGLE	HORIZ	ANGLE			MINIMUM	MAXIMUM		
RSW35-N2	Two Stage	35,000	24,000	8 – 11 ft.	7 – 9 ft.	8 – 16 ft.	6 – 18 ft.	Natural	6.0" w.c.	7" w.c.	14" w.c.	120VAC/60 Hz 0.4 Amp Direct Spark	55 lbs
RSW35-L2								Propane	11" w.c.	11.5" w.c.			
RSW35-N3	Two Stage w/ Remote	35,000	24,000	8 – 11 ft.	7 – 9 ft.	8 – 16 ft.	6 – 18 ft.	Natural	6.0" w.c.	7" w.c.	14" w.c.	120VAC/60 Hz 0.4 Amp Direct Spark	55 lbs
RSW35-L3								Propane	11" w.c.	11.5" w.c.			
RSW50-N2	Two Stage	50,000	34,000	9 – 12 ft.	8 – 11 ft.	8 – 16 ft.	10 – 20 ft.	Natural	6.0" w.c.	7" w.c.	14" w.c.	120VAC/60 Hz 0.4 Amp Direct Spark	62 lbs
RSW50-L2								Propane	11" w.c.	11.5" w.c.			
RSW50-N3	Two Stage w/ Remote	50,000	34,000	9 – 12 ft.	8 – 11 ft.	8 – 16 ft.	10 – 20 ft.	Natural	6.0" w.c.	7" w.c.	14" w.c.	120VAC/60 Hz 0.4 Amp Direct Spark	62 lbs
RSW50-L3								Propane	11" w.c.	11.5" w.c.			

* The suggested mounting heights and spacing are subject to site conditions. Heaters can be operated at excessive weather conditions. Excessive weather and high winds (15+ mph) can reduce the effectiveness of the heaters.

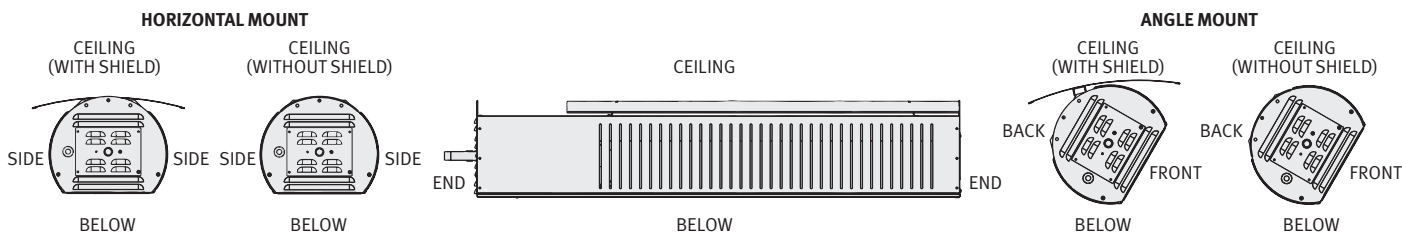
** Can be operated as a single stage heater with factory supplied jumper wire.

Dimensions



Model Size	A	B	C
RSW35	9-1/2"	11-3/4"	48"
RSW50		13-3/8"	

Minimum Clearances to Combustibles – Outdoor Installations**



MODEL	MOUNTING ANGLE	CEILING	CEILING* WITH SHIELD	BACK	BACK WITH SHIELD	SIDE	END	BELOW	FRONT
RSW35	0°	22"	10"	12"	12"	24"	12"	40"	48"
	15° & 30°	23"	14"	12"					
	45° & 60°	24"	17"	8"					
RSW50	0°	22"	10"	12"	12"	28"	16"	60"	50"
	15° & 30°	22"	14"						
	45° & 60°	27"	17"					48"	

* Installed with optional clearance shield to reduce ceiling and back clearances.

** Heaters can be installed indoors. Indoor applications require higher clearances. Refer to Installation Manual for Indoor Clearances to Combustible Requirements.

Optional Accessories

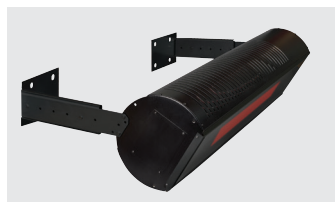
Heat Shield



Overhead Clearance Reduction

Through use of the optional heat shield, clearances above the heater can be reduced for applications with tighter overhead space.

Wall or Ceiling Mount



Optional Mounting Bracket

The adjustable mounting brackets allows wall mounted or ceiling suspended heater installations at varying angles.

Control Options

Control Switch (N2/L2)



Individual or Zone Control

Heaters can be controlled individually or in zones using 3-position switch or a thermostat. This permits low fire on mild days or full power on cold days.

Remote Control (N3/L3)



One Remote Included per Heater

Heaters can be controlled individually using the 2-stage remote control. One remote can control multiple remote control heaters. Wireless remote operation included on N3/L3 models.